



SPACES

RESTAURANT

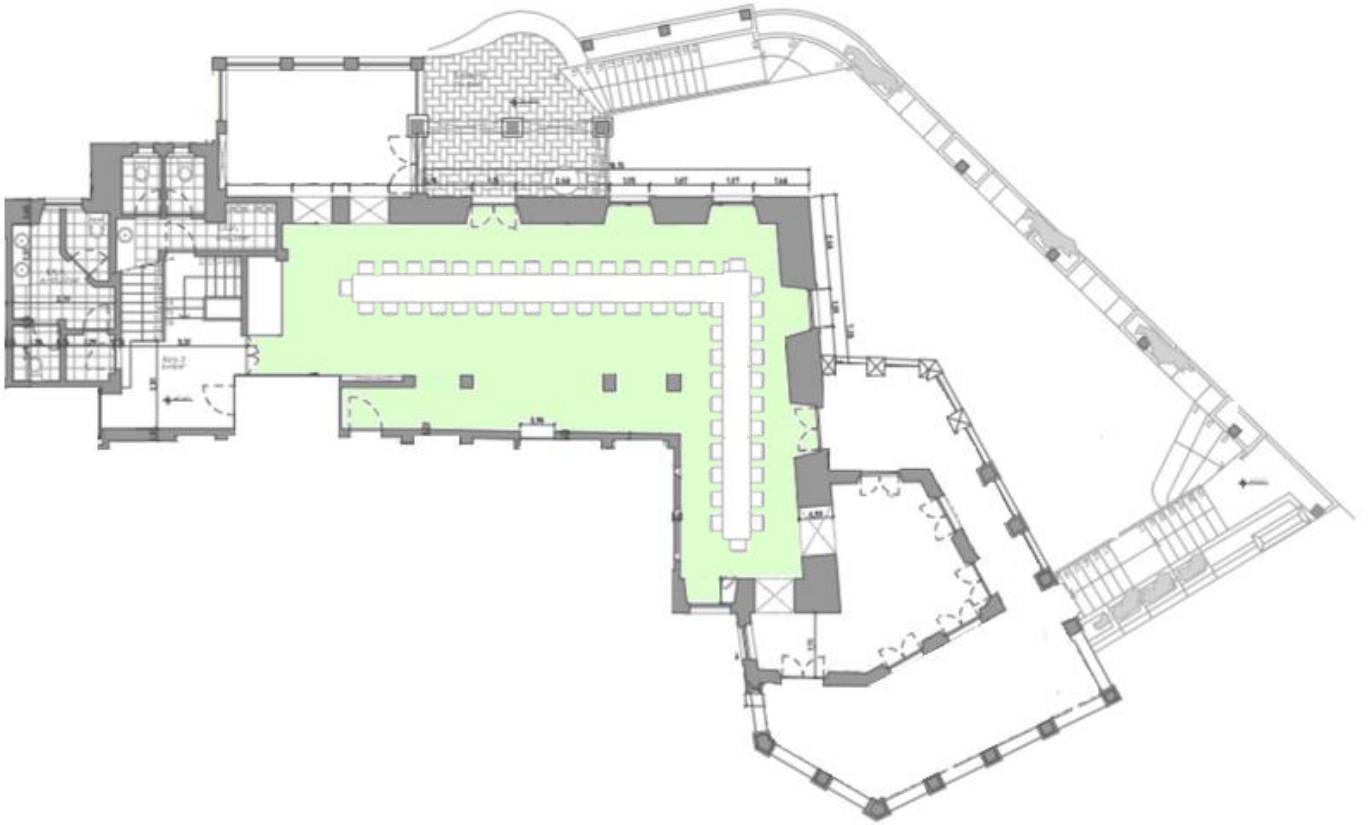
With large windows and doors open to the Sintra Mountains, the restaurant is open year round for lunch and dinner. Lawrence's Restaurant is also used for events with special menus, having a capacity for 88 people (including the elegant indoor area as well as lovely outdoor balconies). The restaurant offers a menu with traditional Portuguese cuisine and international classics. The wine list consists mainly of Portuguese wines, with an emphasis on Sintra regional wines.

TOTAL AREA: 129M2 MAXIMUM CAPACITY: 88 PEOPLE
- DEPENDING ON THE EVENT CONFIGURATION, THE CAPACITY CAN BE ADJUSTED.

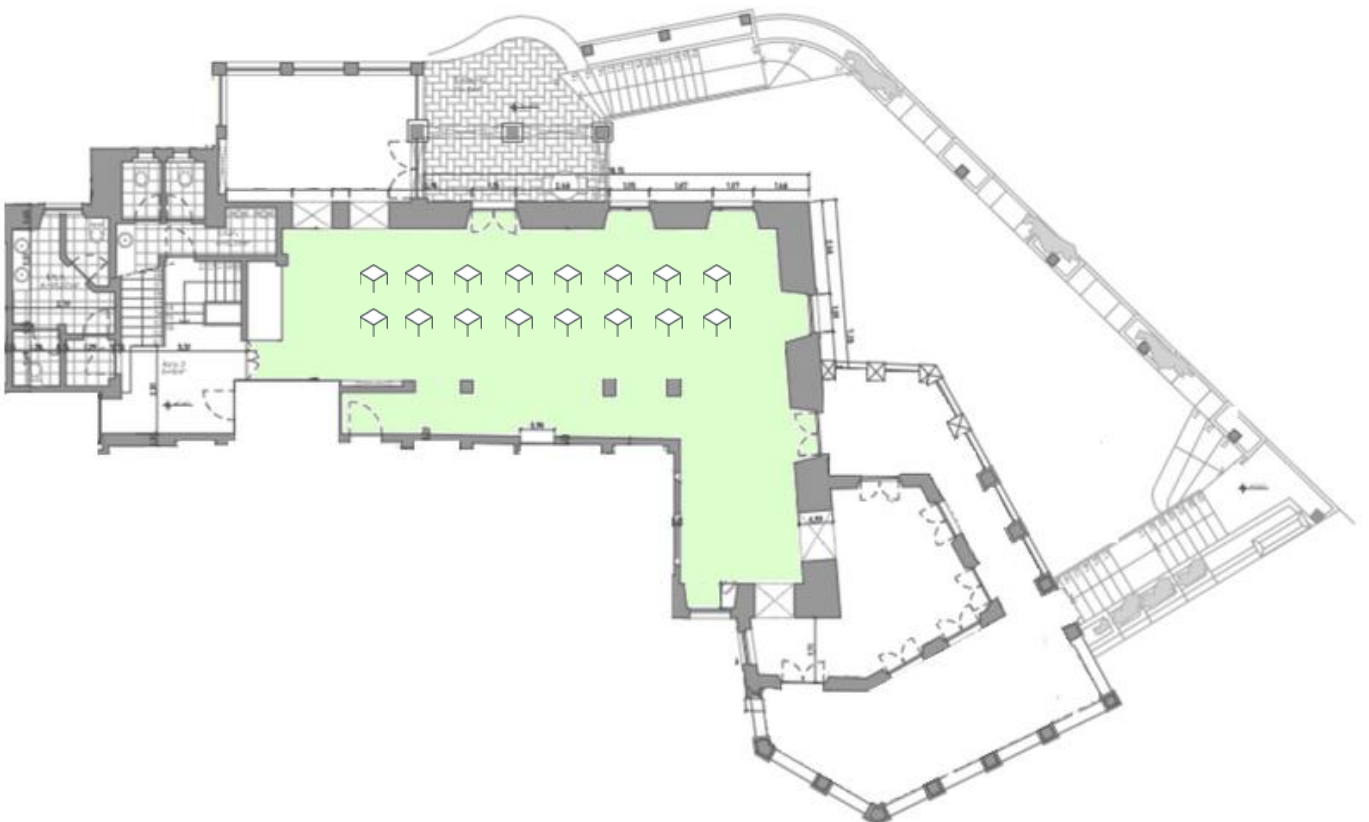
SUGGESTIONS

- Main Room with capacity for 60 people without buffet
- Main Room with buffet, maximum capacity of 35 people at a single L-shaped table
- Main Room with Oval Room, maximum capacity of 70 people without buffet
- Main Room with Oval Room and closed terrace, maximum capacity of 85 people without buffet. With buffet the capacity is reduced to half

BANQUET SETUP



CLASSROOM STYLE SETUP





“AT LAWRENCE DINNER LASTED UNTIL EIGHT, WITH LIGHTS; - AND ALENCAR ALWAYS TALKED. HE HAD FORGOTTEN THAT DAY THE DISAPPOINTMENTS OF LIFE, ALL LITERARY GRUDGES, HE WAS IN AN EXCELLENT VEIN ”

EÇA DE QUEIROZ, THE MAIAS, 1888







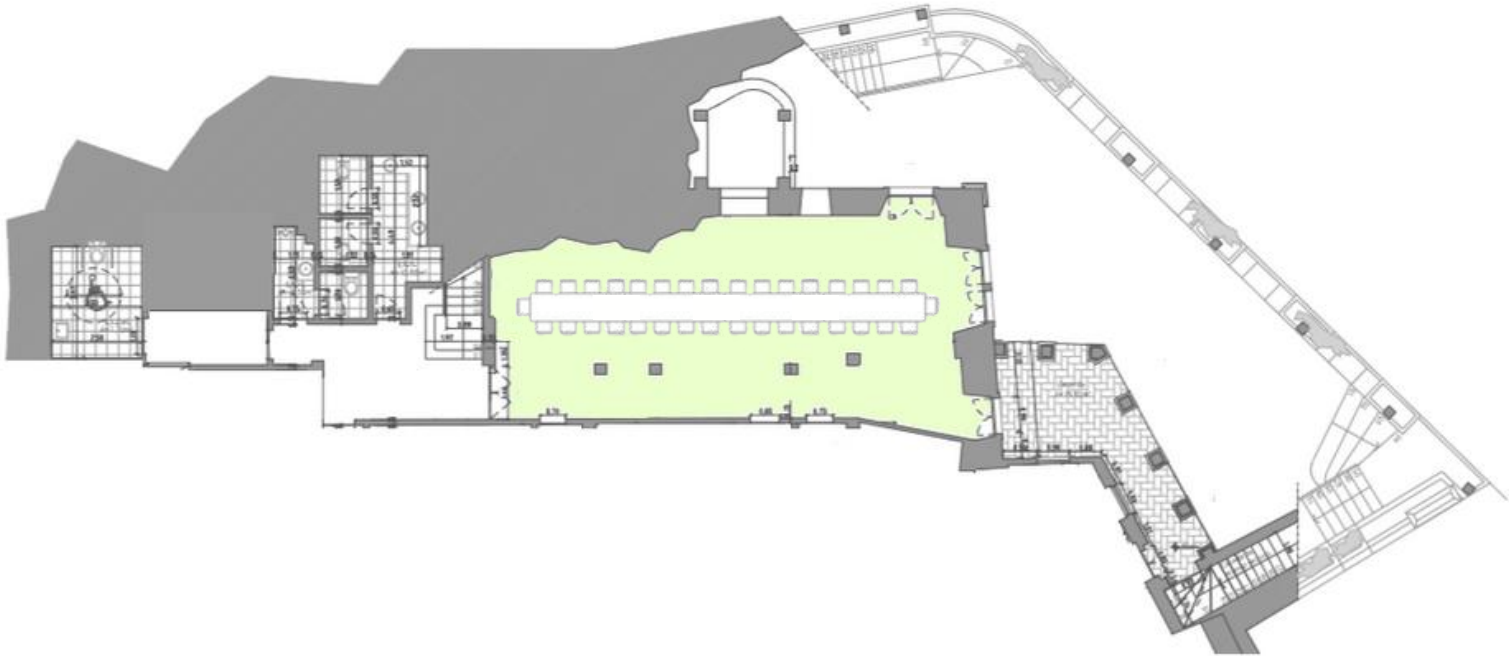
THE KNIGHT'S HALL

A 72 m2 room with direct access to the Forest Terrace (95.60 m2), where welcome drinks and coffee breaks can be served. Depending on the event configuration, the maximum space capacity can vary.

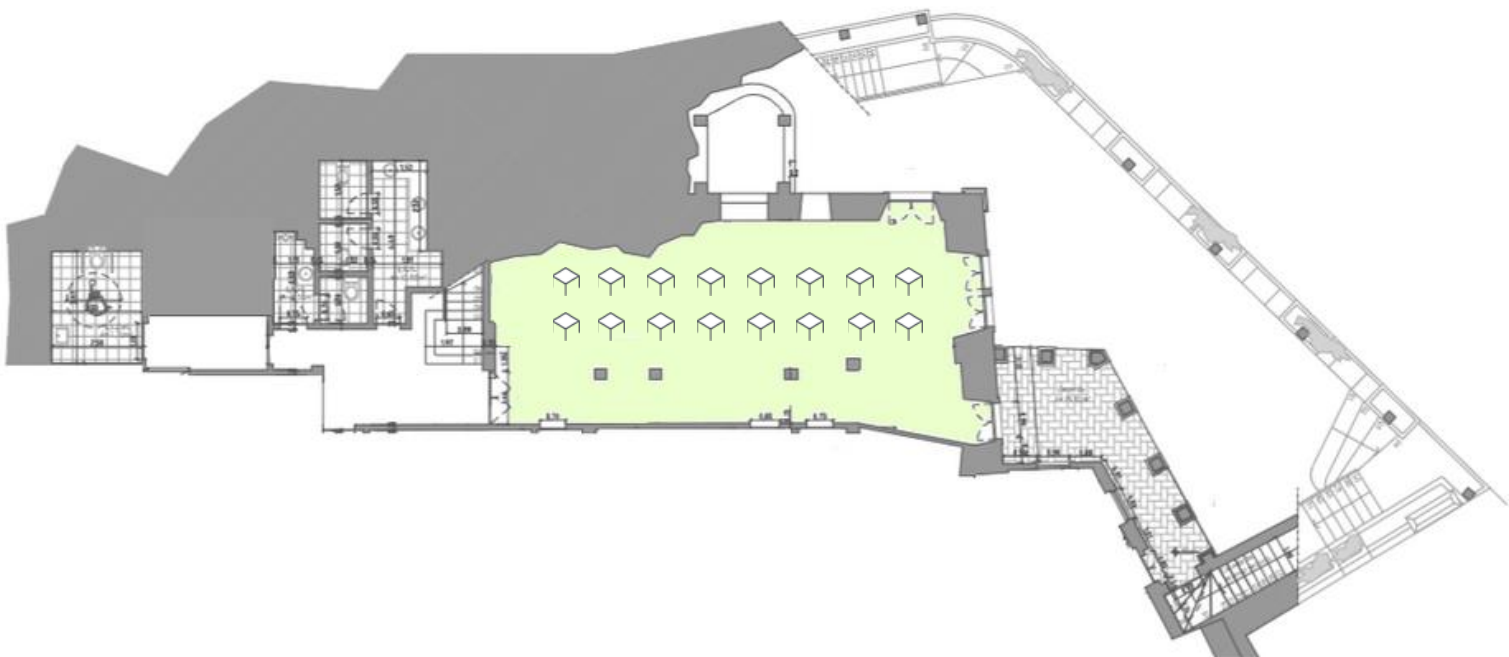
SUGGESTIONS

- Single table without buffet/coffee break table - 42 people
- Single table with buffet/coffee break table - 30 people
- Individual tables with buffet/coffee break table - 20 people
- U-Shape - 20 people
- Classroom - 24 people
- Auditorium without buffet/coffee break table - 50 people

BANQUET SETUP



CLASSROOM STYLE SETUP



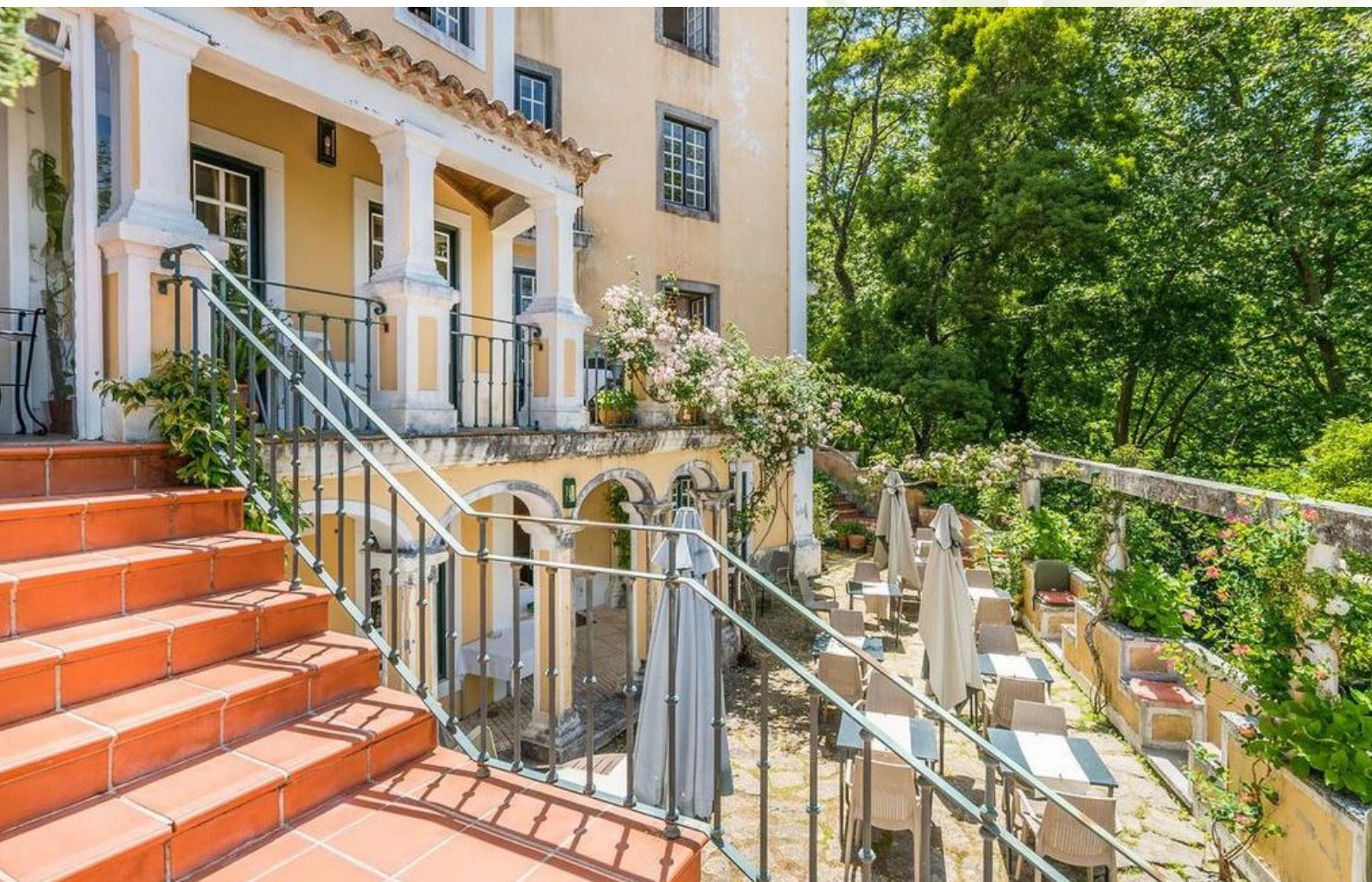


STRIPED ROOM

A private space, in the restaurant, with a unique decoration and capacity for up to 10 people.

FOREST TERRACE

An outdoor space, surrounded by nature and the magic of the Sintra Mountains. It has a capacity for 30 people with a single table.





"THERE IS A PLEASURE IN THE PATHLESS WOODS,
THERE IS A RAPTURE ON THE LONELY SHORE,
THERE IS SOCIETY WHERE NONE INTRUDES,
BY THE DEEP SEA, AND MUSIC IN ITS ROAR:
I LOVE NOT MAN THE LESS, BUT NATURE MORE,
FROM THESE OUR INTERVIEWS, IN WHICH I STEAL
FROM ALL I MAY BE, OR HAVE BEEN BEFORE,
TO MINGLE WITH THE UNIVERSE, AND FEEL
WHAT I CAN NE'ER EXPRESS, YET CANNOT ALL CONCEAL."

LORD BYRON, CHILDE HAROLD'S PILGRIMAGE, 1812-1818

THE GREEN ROOM

A cozy space, with a unique decoration and views of the Sintra Mountains. Capacity for 5 people. Perfect for meetings.

- Natural light
- WiFi
- Fireplace
- 4 electrical outlets





LIBRARY

With a literary and welcoming atmosphere, the hotel's library is a private space ideal for meetings, with fantastic views of the Sintra's Mountains. It has a capacity for 6 people.

- Natural light
- WIFI
- Fireplace
- 6 electrical outlets

THE RED ROOM

One floor above the library, a space with plenty of natural light, with a capacity for 6 people and a fantastic view of the Sintra Mountains.

- Natural light
- WIFI
- Fireplace
- 6 electrical outlets





AREA

CAPACITIES

W/BUFFET

WITHOUT/BUFFET

KNIGHT'S
ROOM

73m2

20 people

30 people

RESTAURANT

130m2

60 people

70 people



THE CAPACITIES PRESENTED DEPEND ON THE DECORATION, IN ADDITION TO THE FORMATS, ARRANGEMENTS AND DIMENSIONS OF TABLES



	AREA	NATURAL LIGHT	FIREPLACE	WIFI	ELECTRICAL OUTLETS
GREEN ROOM	14,6m2	✓	✓	✓	4
RED ROOM		✓	✓	✓	6
LIBRARY	17,80m2	✓	✓	✓	6

